

# Hybrid laboratory/field trial with cats



**AMY FISCHER, PHD**

**TEACHING ASSOCIATE PROFESSOR  
UNIVERSITY OF ILLINOIS ANIMAL SCIENCES**

**BOARD MEMBER  
ACC&D**

**“Lessons learned: field studies with cats and with dogs”  
ACC&D 6<sup>th</sup> International Symposium • July 23, 2018**

Could we replicate GonaCon's laboratory success  
in the "real world" (**cats** and **conditions**)?





# Random source cats



# The Feline Team

Amaretto

Black Russian

Bobwhite Quail

Bon Bon

Figment

Frangelico

Gherkin

Hermione

Hostess Cupcake

Hot Toddy

Jello Shot

Klondike

Macchiato

Mariska Hargitay

Marlene Walker

Mimosa

Mojito

Monkey

Moonshine

Oyster

Ozzie

Pearl

Polly Pancakes

Princess Carolyn

Ruby Port

Samoa

Sassafras

Stella Artois

Tawny Port

Thirteen

## The Boys

*Bathroom Kitty*

Captain Obvious

Conway Kitty

Maxx

Sirius Black

Tom Collins

Wicken

Wolfgang

## Dismissed Queens

Birdie

Gimlet

Mabel

Margarita

Maude

Ruby Port

Svetlana

Yo-Ho Tokyo Black

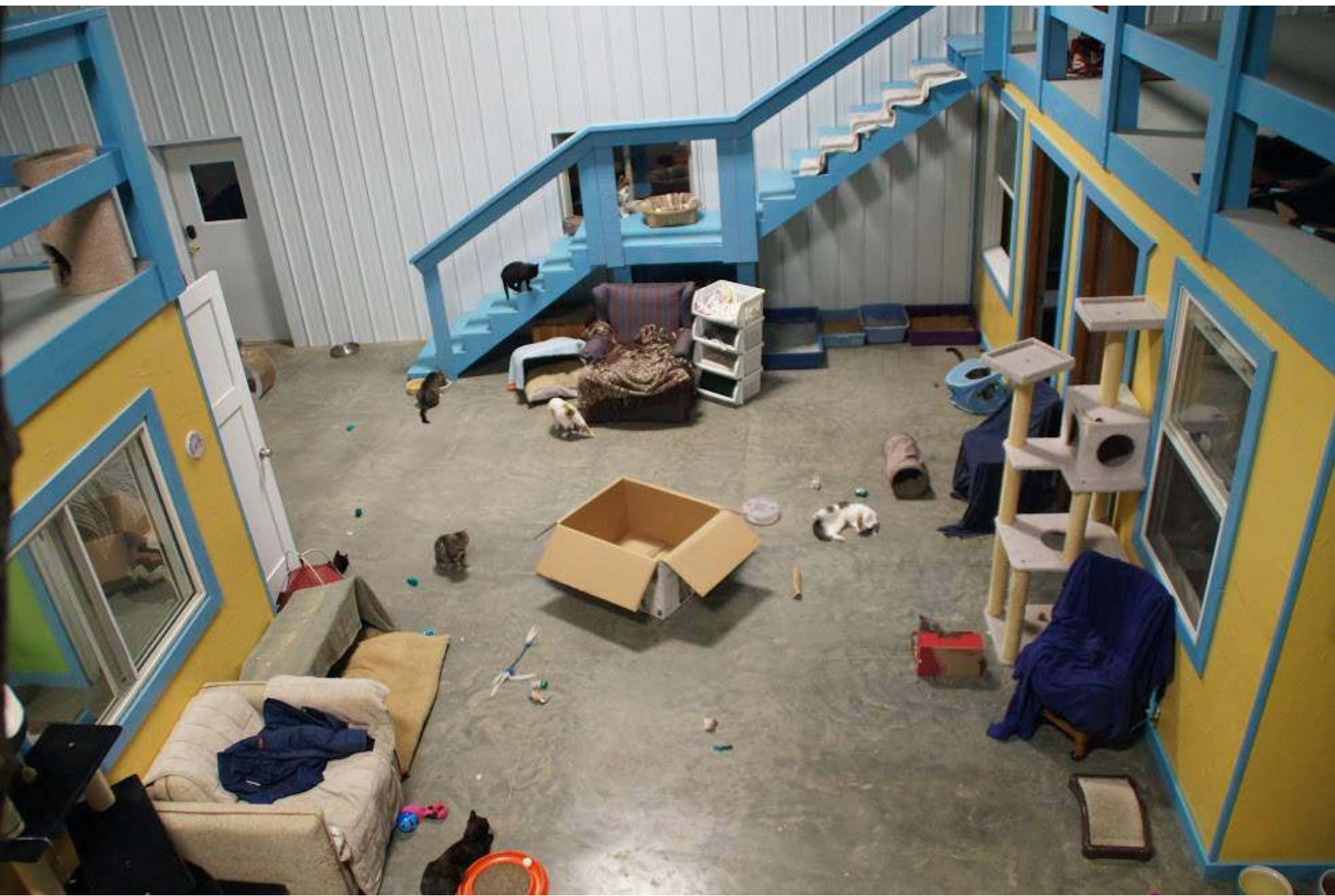




















# Clowder Concepts, LLC



- USDA-licensed research facility
- Illinois Dept. of Agriculture-licensed animal shelter



# Lesson 1: Incorporate shelter medicine principles in facility and study design.



# Lesson 2: Increase budget for veterinary support.





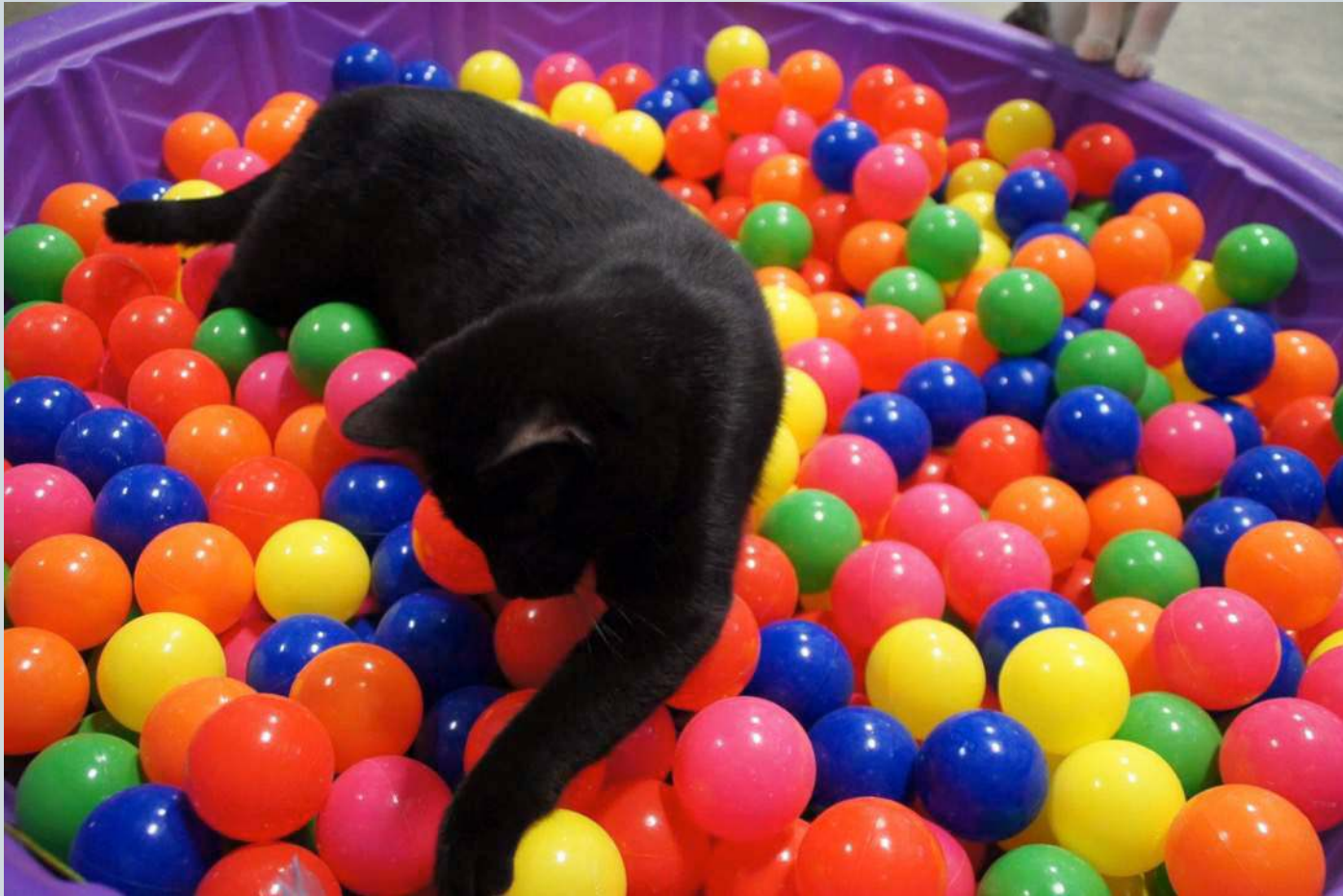
## Lesson 2: Increase budget for veterinary support.



# Lesson 3: Create an extremely detailed protocol.



# Lesson 4: Optimize enrichment and training.



















WE'RE  
KIND  
OF A  
Big  
per





Petmate **PET TAXI**





# HYBRID MODEL INTERMEDIATE BETWEEN A LABORATORY AND FIELD STUDY

## **A humane paradigm shift in feline research**

# The Human Team

## Co-Investigators

Amy Fischer, PhD

Julie Levy, DVM, PhD,  
DACVIM

Kevin Morris, PhD

## Attending Veterinarian

Bob Weedon, DVM, MPH

## Radiologist

Jodi Matheson, DVM,  
DACVR

## Study Monitor

Valerie Benka, MS, MPP

## Statistician

Julie Wolf, MS

## Project Manager

Kayla Myers, BS

## ACC&D Board/Scientific Advisors/Staff

Joyce Briggs, MS

Marc-Antoine Driancourt, PhD, DSc

Susan Getty, MS

Joanne Maki, DVM, PhD

Linda Rhodes, VMD, PhD

## Center for Conservation and Research of Endangered Wildlife (CREW)

Lindsay Vansandt, DVM PhD

## USDA National Wildlife Research Center (NWRC)

Doug Eckery, PhD

Darcy Orahood Mora, MS

**Plus many on-site contributors**



Thank  
you!